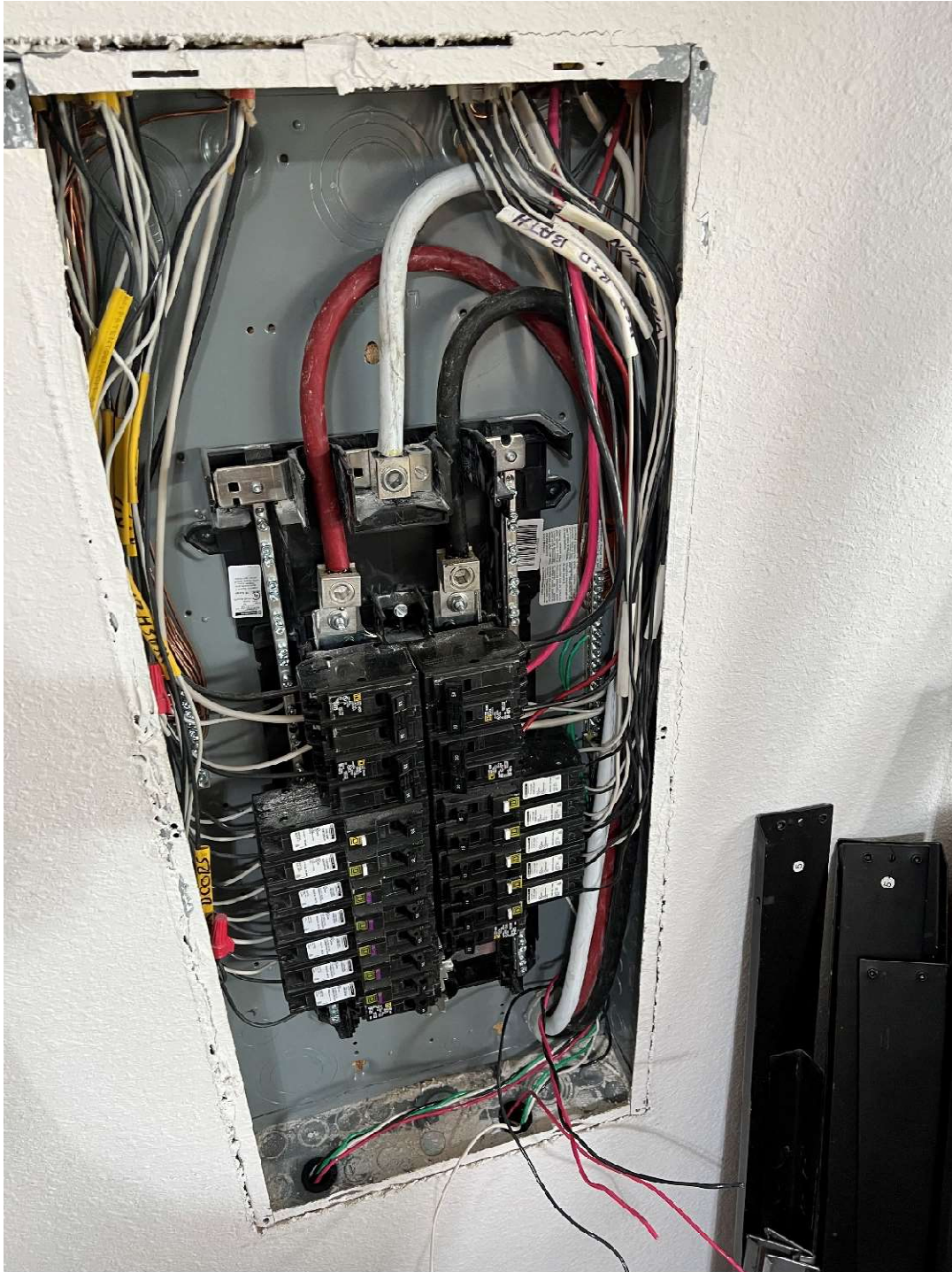
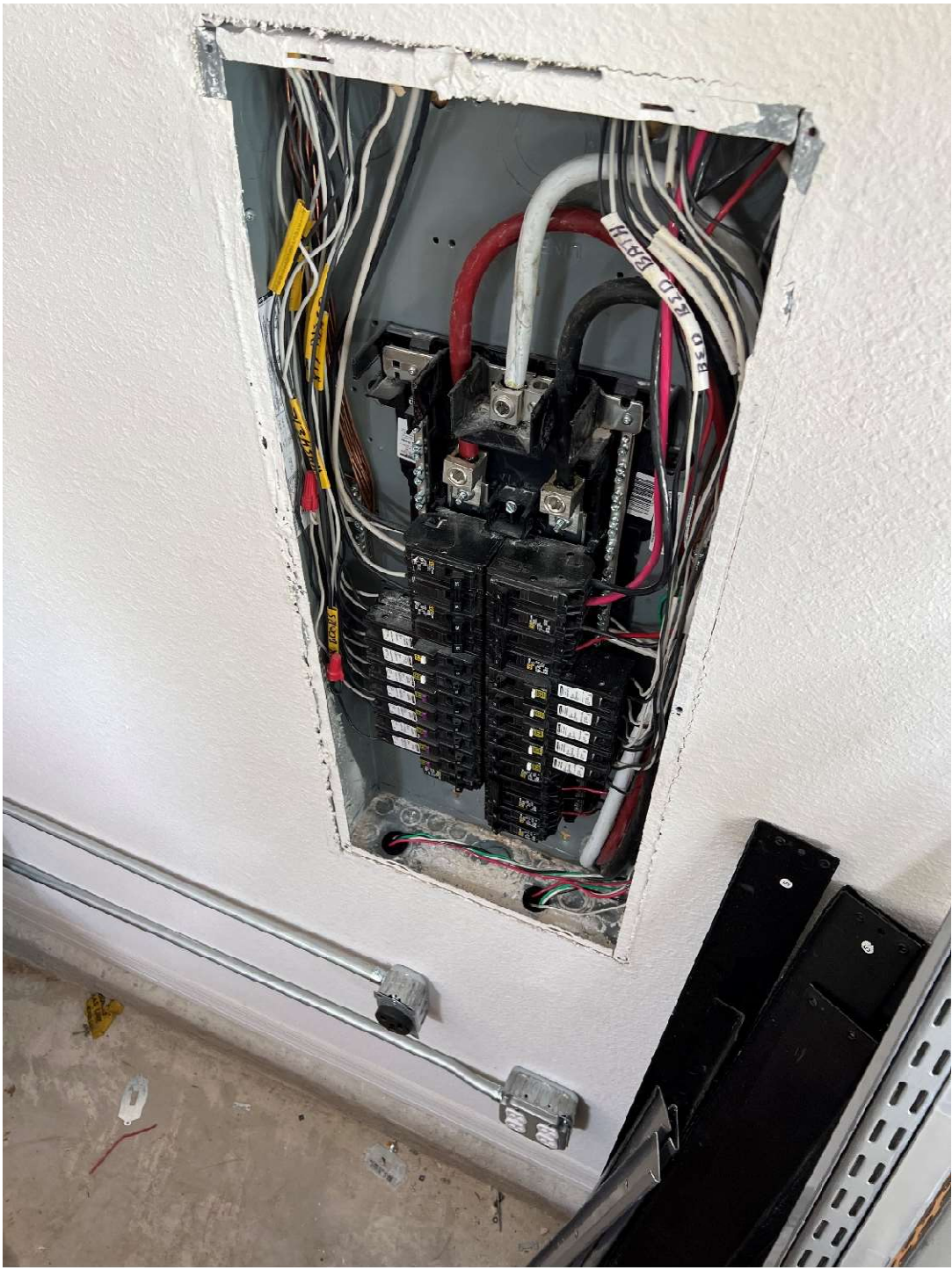


Not enough outlets for a workshop. Installed a bunch of 120VAC / 20A outlets. And a couple 3 wire 220VAC outlets for a welder. The extra wire to change to 4 wire outlets is installed.



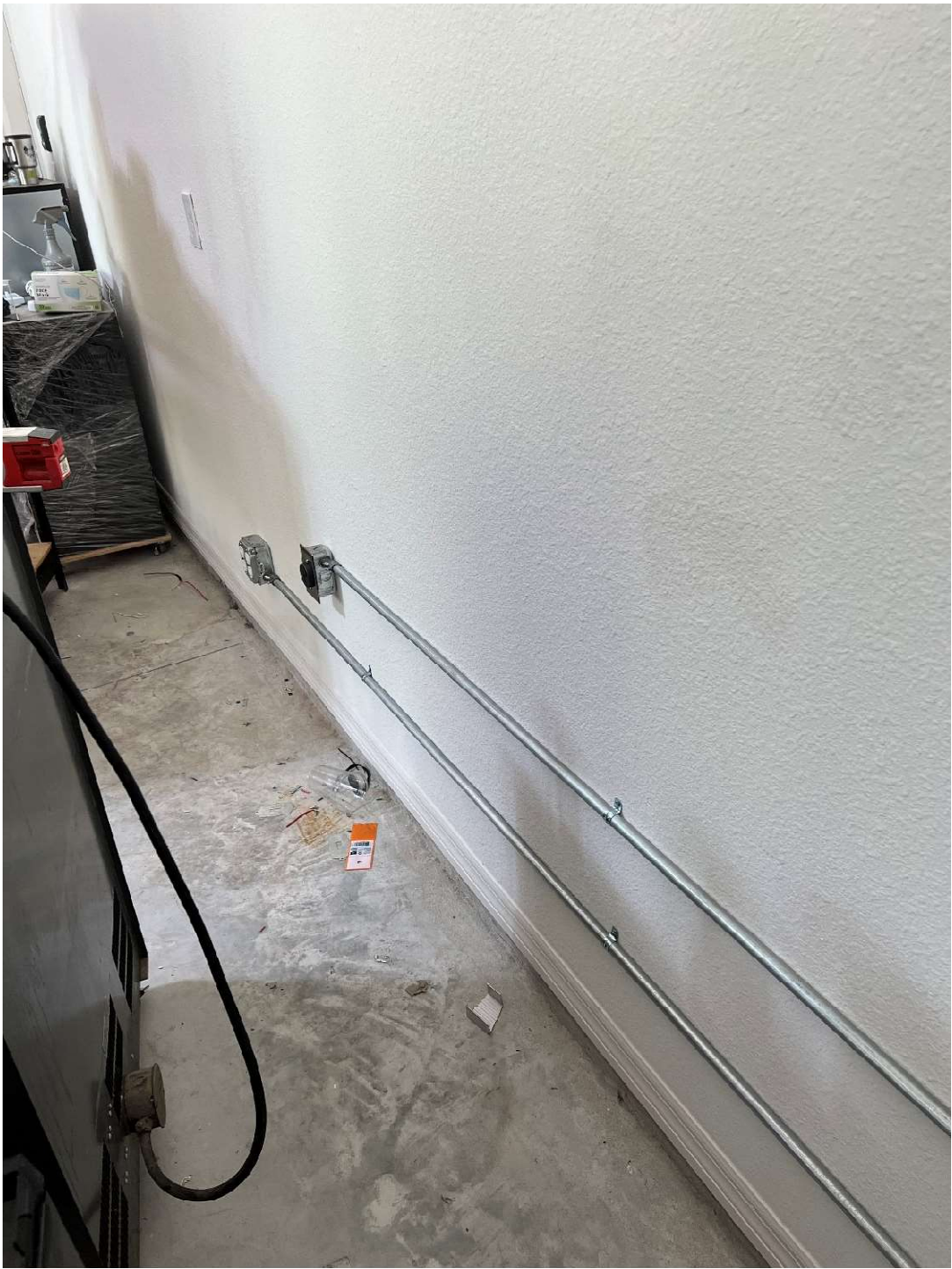
The welder outlets and the 120VAC outlets are separate.



A 120VAC 4 plex outlet shown in the corner.



The second welder outlet and another 120VAC 4 plex outlet shown.



Half the 120VAC outlets are on one side and the other half on the other. The wire gauge was 12 AWG and so breakers are 20A. I used 12 AWG for the welder outlets too since my welder never exceeds 20A. The welder outlets are rated 50A, but the 2 circuit breakers are 20A each.

